

**Key-Link**  
*Railing Systems*

**CABLE  
RAILING**

**Enjoy the View**



**CABLE RAILING SYSTEMS**

**HORIZONTAL INFILL**

**VERTICAL INFILL**

[KeyLinkOnline.com](http://KeyLinkOnline.com)

## ABOUT KEY-LINK FENCING & RAILING

Key-Link is a leading manufacturer of quality aluminum fencing and railing for both residential and commercial projects. Key-Link is an affiliate company of Superior Plastic Products.



## MODERN & CONTEMPORARY ALUMINUM

Thank you for your interest in Key-Link Fencing & Railing. Key-Link features many unique and appealing styles to choose from in today's most popular colors and textures. You'll see why Key-Link is the preferred choice for both Builders and Homeowners alike.



In addition to aluminum being lightweight and easy to work with, it's also very strong and durable; yet provides a very distinctive appearance to your setting. From securing your deck, porch or balcony to containment around your business, yard or pool, Key-Link is sure to have the solution perfect to meet your needs. Learn more about Key-Link and our products at [KeyLinkOnline.com](http://KeyLinkOnline.com)

## POWDER COATING

*Key-Link's AAMA 2604 & 2605 Powder Coated Aluminum Products Offers One Of The Most Economical, Longest-Lasting, & Color-Durable Quality Finishes On The Market Today.*

- Economical, Durable & Long Lasting Decorative Finish
- Resistant to Chipping, Scratching, Fading & Wearing
- Increases Life of Product • Protects from Harsh Elements
- No Toxic Chemicals Released During Process
- Colors Stay Bright & Vibrant • Environmentally Friendly
- Reduced Energy Requirements • Uniformity Control



### STANDARD AAMA 2604:

AAMA 2604 powder coatings are formulated with super durable or modified polyester resins. This finish provides good color and gloss retention for approximately five years of exposure.

### OPTIONAL AAMA 2605:

AAMA 2605 is the high-performance exterior specification. These finishes are resistant to moisture, weathering, ozone and UV radiation. An application for this finish would include architectural projects that require long term cosmetic & functional protection up to ten years.



## PRODUCT INDEX

---

	PAGE
Company Information. . . . .	2
Powder Coating Overview . . . . .	2
Vertical Cable Railing . . . . .	4-5
Horizontal Cable Railing. . . . .	6-7
Cable Fittings for Wood, Plastic & Composite Railing . . . . .	8

NOW CHOOSE FROM TWO CABLE ALUMINUM RAIL SYSTEMS:

### **VERTICAL OR HORIZONTAL CABLE INFILL OPTIONS**

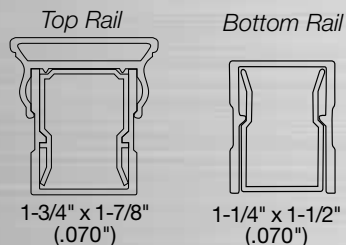


# VERTICAL CABLE SYSTEMS



## AVAILABLE FOR AMERICAN RAILING

### AMERICAN PROFILE



1-3/4" x 1-7/8"  
(.070")

1-1/4" x 1-1/2"  
(.070")

- Self-Centering Brackets
- Rattle-Free System
- Limited Lifetime Warranty
- AAMA Powder Coating
- 316 Grade S.S. Cable
- 36" & 42" Height Options
- 6' & 8' Length Options
- Performance Engineered & Tested to ICC Standards
- Perfect Solutions For Unobstructed Views

- No Jobsite Drilling Required for Typical Installations
- Sections Come Pre-assembled For Ease of Installation
- Boxed Kits Include Mounting Brackets & Hardware

Textured  
White

Textured  
Black

Textured  
Bronze

**AMERICAN COLOR OPTIONS**







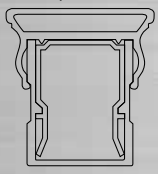
# HORIZONTAL CABLE SYSTEMS



## CHOOSE BETWEEN TWO RAILING STYLES

### AMERICAN PROFILE

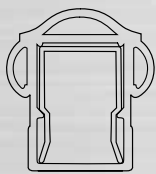
Top Rail



1-3/4" x 1-7/8"  
(.070")

### ARABIAN PROFILE

Top Rail



1-3/4" x 1-7/8"  
(.070")

- Unique Pre-drilled Posts Make Installations Fast & Easy
- Cable Easily Rounds Corner Post Stairs w/One Tensioner Set
- Pre-drilled Center Baluster & Top Rail Conveniently Boxed as Kit
- Pre-installed Post Fittings Make Threading Cable Easy & Effortless
- Only Single Post at Corners • Cable Capable of Spanning up to 100'

- Self-Centering Brackets
- Rattle-Free System
- Limited Lifetime Warranty
- AAMA Powder Coating
- 316 Grade S.S. Cable
- 36" & 42" Height Options
- 6' & 8' Length Options
- Performance Engineered & Tested to ICC Standards
- Perfect Solutions For Unobstructed Views

Gloss  
White

Gloss  
Black

Gloss  
Bronze

Gloss  
Silver

### ARABIAN COLOR OPTIONS

Textured  
White

Textured  
Black

Textured  
Bronze

### AMERICAN COLOR OPTIONS



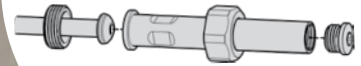




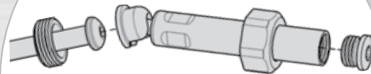
# CABLE RAIL FITTINGS STAINLESS STEEL HARDWARE

1 Sku - Level Rail • 1 Sku - Stair Rail

**LEVEL  
FITTING**



**STAIR  
FITTING**



**UPGRADE** your new or existing  
wood, plastic or composite railing  
with stainless steel cable.

150 Orlan Road | New Holland, PA 17557



**DEALER**

Item# DIACRCAT

